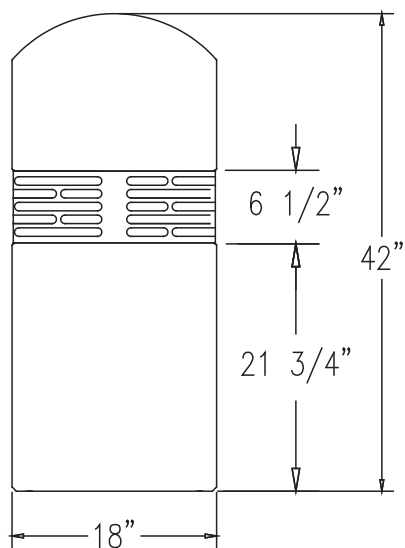


TF6084

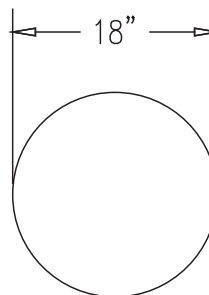
Concrete Lighted Bollard

Product Data

| | |
|-----------|--|
| Size | 18" dia x 42"h |
| Weight | 700 lbs |
| Material | Reinforced Concrete Aluminum Grills Acrylic Lens LED Puck Light |
| Anchoring | Option A - (4) 1/2" Threaded Inserts |
| Sealed | Factory Sealed |



ELEVATION VIEW



TOP VIEW

Site Furnishings Limited Warranty:

For a period of two (2) years for concrete products, one (1) year for plastic products and five (5) years for metal products when the customer has received their product, Wausau Tile, Inc. warrants its concrete products against defects in workmanship and materials per industry standards. This warranty does not cover the above products for cracking and faulting caused by settling due to an improper base; nor does it cover damage caused by impact, vandalism or natural disaster.

CALL FOR FURTHER DETAILS & PRICING.



FurnitureLeisure

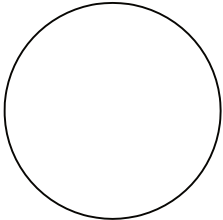
Commercial Site Furnishings

1-800-213-2401 | sales@furnitureleisure.com

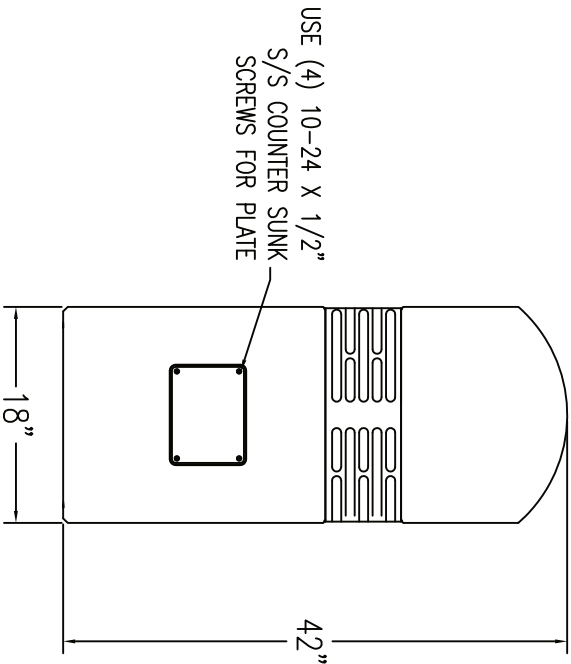
FurnitureLeisure.com PoolFurnitureSupply.com

PicnicFurniture.com PicnicTableSupplier.com

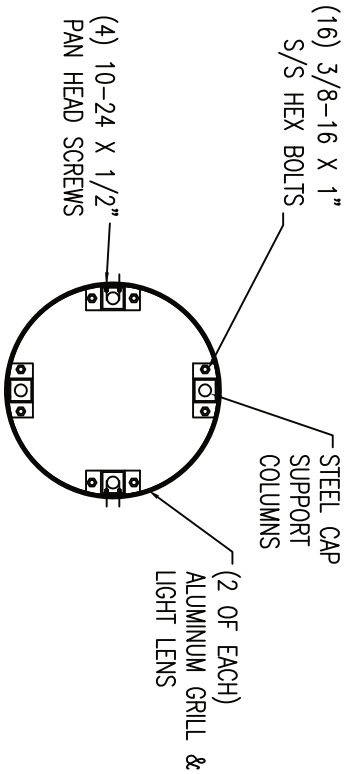
ParkTables.com UBrace.com



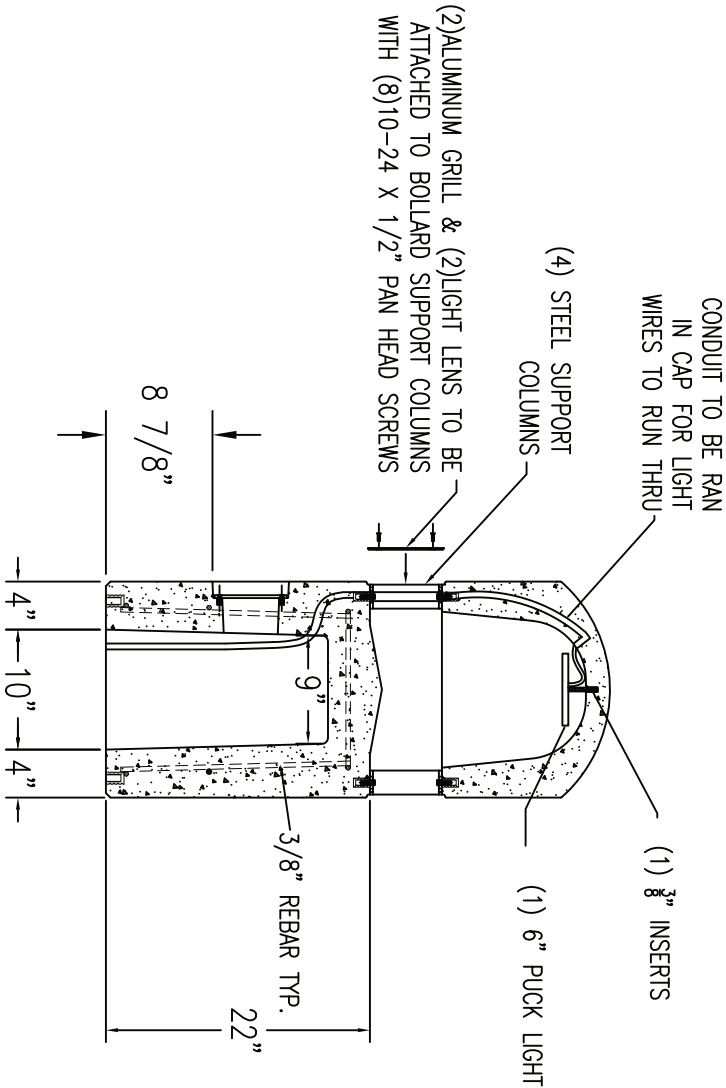
1 TOP VIEW



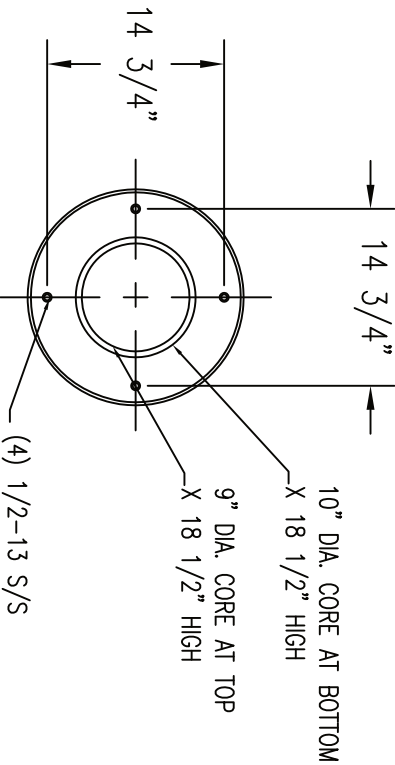
2 ELEVATION VIEW



10 ALUMINUM GRILL CROSS SECTION



4 CROSS SECTION



3 BOTTOM VIEW

| REVISIONS | | |
|-----------|------|-------|
| NAME | DATE | NOTES |
| 1 | --- | --- |
| 2 | --- | --- |
| 3 | --- | --- |
| 4 | --- | --- |
| 5 | --- | --- |
| 6 | --- | --- |
| 7 | --- | --- |
| 8 | --- | --- |

CONFIDENTIAL INFORMATION
THESE DRAWINGS, SPECIFICATIONS AND OTHER INFORMATION AND DOCUMENTS ACCOMPANYING THEM ARE THE CONFIDENTIAL AND PROPRIETARY PROPERTY OF WAUSAU TILE, INC. THE DRAWINGS THEMSELVES SHALL BELONG TO THE OWNER FOR USE ONLY ON THE PROJECT. ANY ADDITIONAL USE SHALL REQUIRE THE PRIOR WRITTEN APPROVAL OF WAUSAU TILE, INC. THE PROPRIETARY INFORMATION CONTAINED WITHIN THE DRAWINGS AND THE DOCUMENTS IS AND SHALL REMAIN THE SOLE PROPERTY OF WAUSAU TILE, INC.

JOB NAME

ADDRESS
CITY, STATE ZIP

UNLESS OTHERWISE SPECIFIED
DIMENSIONS ARE IN INCHES
FRACTIONS ±1/8"

| |
|-----------------|
| DRAWN BY: TJS |
| DATE: 1/20/17 |
| CO NUMBER: ? |
| WEIGHT: 700 LBS |

PRODUCT NO.

TF 6084