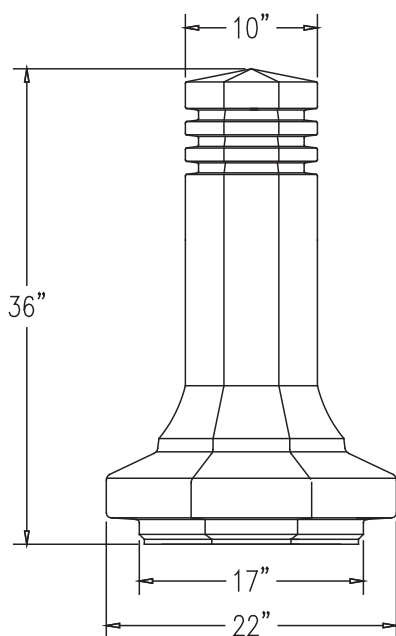


TF6063

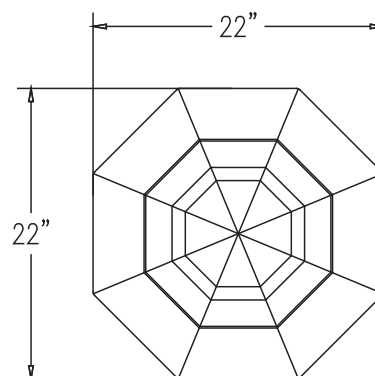
Soldier Field Portable Concrete Bollard

Product Data

Size	22"dia x 36"h
Weight	400 lbs
Material	Reinforced Concrete
Anchoring	Anchoring Optional: Option A -(4)1/2" Threaded Inserts Option B -4"dia x 14"Core
Sealed	Factory Sealed



ELEVATION VIEW



TOP VIEW

Site Furnishings Limited Warranty:

For a period of two (2) years for concrete products, one (1) year for plastic products and five (5) years for metal products when the customer has received their product, Wausau Tile, Inc. warrants its concrete products against defects in workmanship and materials per industry standards. This warranty does not cover the above products for cracking and faulting caused by settling due to an improper base; nor does it cover damage caused by impact, vandalism or natural disaster.

CALL FOR FURTHER DETAILS & PRICING.



FurnitureLeisure

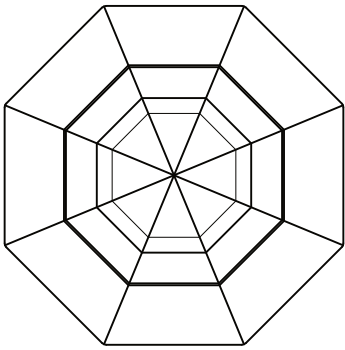
Commercial Site Furnishings

1-800-213-2401 | sales@furnitureleisure.com

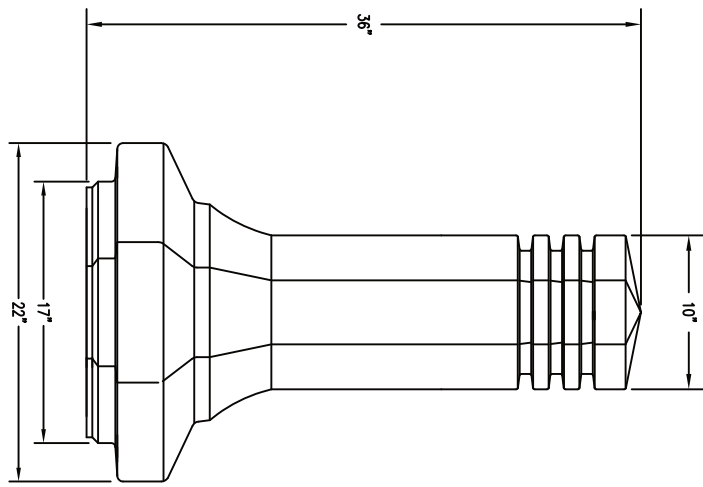
FurnitureLeisure.com PoolFurnitureSupply.com

PicnicFurniture.com PicnicTableSupplier.com

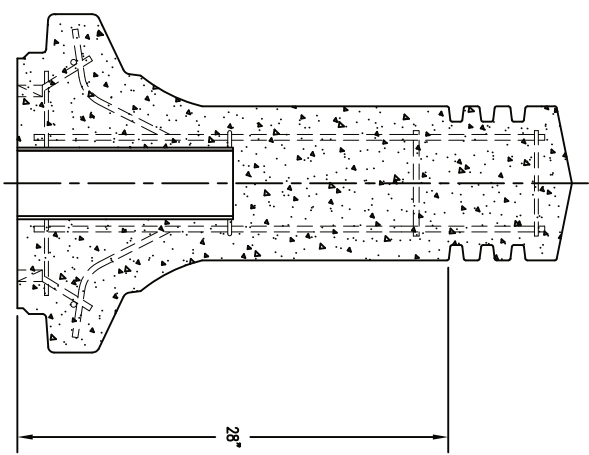
ParkTables.com UBrace.com



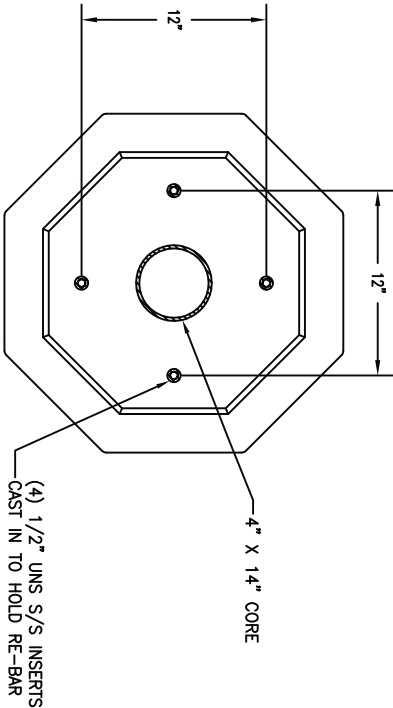
1 TOP VIEW



2 ELEVATION VIEW



4 CROSS SECTION



3 BOTTOM VIEW

REVISIONS		
NAME	DATE	NOTES
1		
2		
3		
4		
5		
6		
7		
8		

THESE DRAWING, SPECIFICATIONS AND OTHER INFORMATION ARE THE PROPERTY OF WATSON TILE, INC. THE DRAWINGS SHALL BE THE PROPERTY OF WATSON TILE, INC. NO PART OF THIS DRAWING SHALL BE REPRODUCED OR TRANSMITTED IN ANY FORM OR BY ANY MEANS, ELECTRONIC OR MECHANICAL, INCLUDING PHOTOCOPYING, RECORDING, OR BY ANY INFORMATION STORAGE AND RETRIEVAL SYSTEM, WITHOUT THE WRITTEN PERMISSION OF WATSON TILE, INC. THE PROPRIETARY INFORMATION CONTAINED HEREIN IS THE SOLE PROPERTY OF WATSON TILE, INC.

JOB NAME

ADDRESS
CITY, STATE ZIP

UNLESS OTHERWISE SPECIFIED
DIMENSIONS ARE IN INCHES
FRACTIONS 1/8"

DRAWN BY: SK
DATE: 6/16/15
CD NUMBER: 7
WEIGHT: 400 LBS

PRODUCT NO.
TF 6063