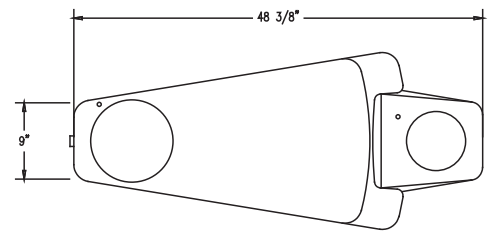


# TF7071

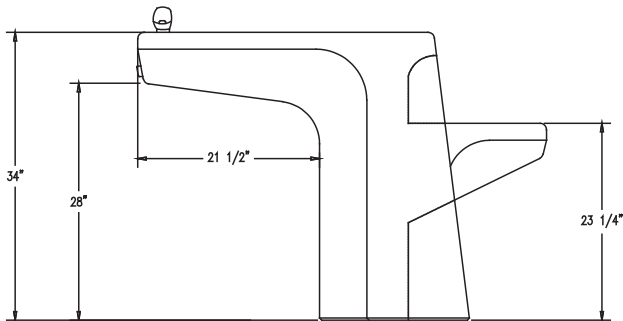
## Concrete Double Drinking Fountain

### Product Data

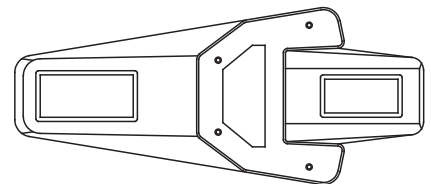
|               |   |
|---------------|---|
| Size          | 48 3/8" x 21" x 34"h  |
| Weight        | 780 lbs   |
| Material      | Reinforced Concrete<br>(2) Spout<br>(3) Access Panels<br>(2) S.S. Bowl<br>(2) Push Button |
| Reinforcing   | Rebar   |
| Anchoring     | (4) 3/8" Threaded Inserts   |
| Sealed        | Factory Sealed  |
| Drinking Bowl | 9 3/4" dia x 1 7/8" / 7" x 1 3/8"   |



BOTTOM VIEW



ELEVATION VIEW

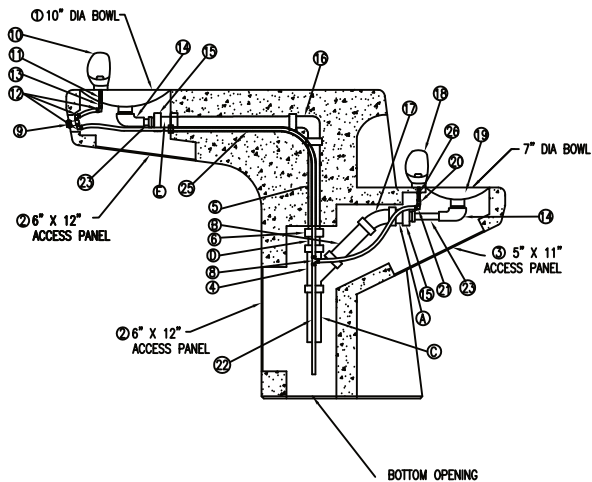


TOP VIEW

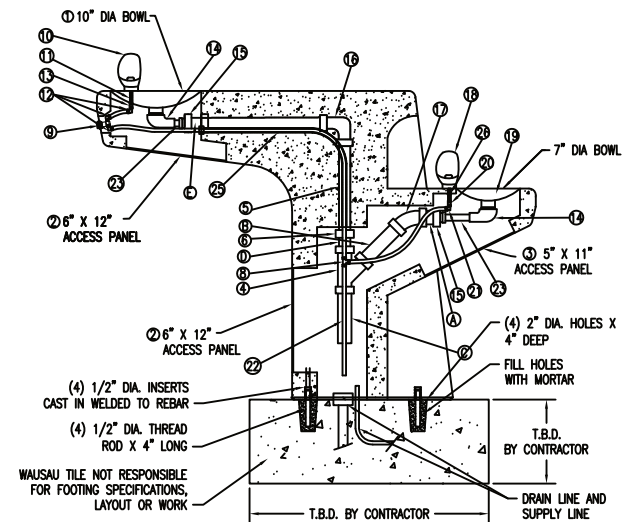
### Site Furnishings Limited Warranty:

For a period of two (2) years for concrete products, one (1) year for plastic products and five (5) years for metal products when the customer has received their product, Wausau Tile, Inc. warrants its concrete products against defects in workmanship and materials per industry standards. This warranty does not cover the above products for cracking and faulting caused by settling due to an improper base; nor does it cover damage caused by impact, vandalism or natural disaster.

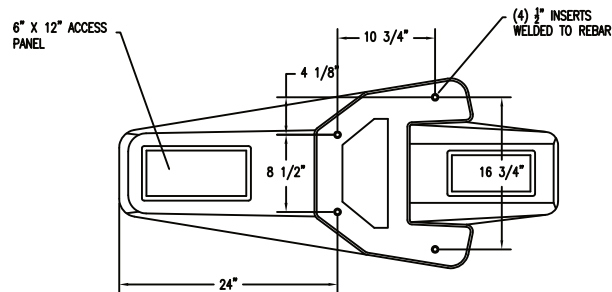
| PARTS LIST FOR ASSEMBLY KIT TF 7071 (TF7071) |   |        |      |  |
|--|---|--------|------|--|
| ITEM #                                       | DESCRIPTION                                 | PART # | QTY. |  |
| 1  | 10" DIA. BOWL                               | 100100 | 1    |  |
| 2  | 6" X 12" ACCESS PANEL                       | 100011 | 2    |  |
| 3  | 7" X 12" ACCESS PANEL                       | 100012 | 1    |  |
| 4  | 3/4" W/ 40 PPS W/EL                         | 100013 | 1    |  |
| 5  | 20 GP 1 1/2" W/ 40 PPS W/EL                 | 100014 | 1    |  |
| 6  | 1 1/2" W/ 40 PPS COUPLER                    | 100015 | 2    |  |
| 7  | 1 1/2" W/ 40 PPS 90° ELBOW                  | 100016 | 1    |  |
| 8  | 1 1/2" SOCKET TO 1 1/4" COMPRESSION RING    | 100017 | 2    |  |
| 9  | 1 1/4" X 12-20-GB TBL EXT TUB (CUT IT HALF) | 100018 | 2    |  |
| 10   | 1/2" ELECTRICAL CONDUIT                     | 100019 | 10'  |  |
| 11   | DRY-SET DRAIN                               | 100020 | 2    |  |
| 12   | 7" DIA. BOWL                                | 100021 | 1    |  |
| 13   | 3/8" PLASTIC TUBING                         | 100022 | 20'  |  |
| 14   | WITH COLA BUBBLER CP                        | 100023 | 1    |  |
| 15   | 1/2" BUBBLER HD                             | 100024 | 1    |  |
| 16   | 3/8" DIA. 1/2" SCH 40 RHP                   | 100025 | 1    |  |
| 17   | 1/4" X 1 1/2" SS SCH 40 RHP                 | 100026 | 1    |  |
| 18   | PUSH ACTIVAT VLV SS (WITH TRIM CAP)         | 100027 | 1    |  |
| 19   | 3/8 SS RHP 1/2" TRIM COUP                   | 100028 | 1    |  |
| 20   | 1/4" SS RHP 1/2" TRIM COUP                  | 100029 | 1    |  |
| 21   | 1/4" RIGID ELBOW 3/8" TUBL FIT              | 100030 | 1    |  |
| 22   | 3/8" RIGID ELBOW 3/8" TUBL FIT              | 100031 | 1    |  |
| 23   | 1 1/2" W/ 40 PPS 90° ELBOW                  | 100032 | 1    |  |
| 24   | 3/8" X 1 1/2" SS SCH 40 RHP                 | 100033 | 1    |  |



1 SIDE SECTION VIEW  
Scale: 1/8" = 1"



2 SIDE SECTION VIEW  
Scale: 1/8" = 1"



3 BOTTOM VIEW  
Scale: 1/8" = 1"

PLEASE CONTACT YOUR LOCAL  
GOVERNMENT OFFICE FOR  
BUILDING CODES IN YOUR AREA

FOR ADDITIONAL INFORMATION OR  
A FULL SCALE ANCHOR DETAIL,  
CONTACT WAUSAU TILE AT  
800-388-8728

#### DRINKING FOUNTAIN MOUNTING INSTRUCTIONS

- 1) DRILL HOLES INTO FOOTING PER PATTERN OF INSERTS ON BOTTOM OF FOUNTAIN.
- 2) THREAD (4) 1/2" DIA. ROD INTO (4) INSERTS ON BOTTOM OF FOUNTAIN.
- 3) FILL DRILLED HOLES WITH NON-SHRINK MORTAR OR EPOXY.
- 4) PLACE FOUNTAIN OVER HOLES AND LOWER DOWN TO FOOTING.
- 5) BRACE FOUNTAIN UNTIL MORTAR IS HARDENED

PLEASE CONTACT YOUR LOCAL GOVERNMENT OFFICE  
FOR BUILDING CODES IN YOUR AREA

| REVISIONS |         |     |     |      | DRAWN BY L.B.E. |         | JOB     |  | MATERIAL |  |
|-----------|---------|-----|-----|------|-----------------|---------|---------|--|----------|--|
| NO.       | DATE    | BY  | NO. | DATE | BY              | TITLE   | JOB NO. |  | WEIGHT   |  |
| 1         | 11/8/11 | JFZ | 4   |      |                 | SCALE   |         |  |          |  |
| 2         |         |     | 5   |      |                 | CHECKED |         |  |          |  |
| 3         |         |     | 6   |      |                 |         |         |  |          |  |

UNLESS OTHERWISE SPECIFIED  
DIMENSIONS ARE IN INCHES  
2 PL. 3/8" 5 PL. 3/16"

DATE

FINISH  
OPTIONS

DWG. NO. TF7071