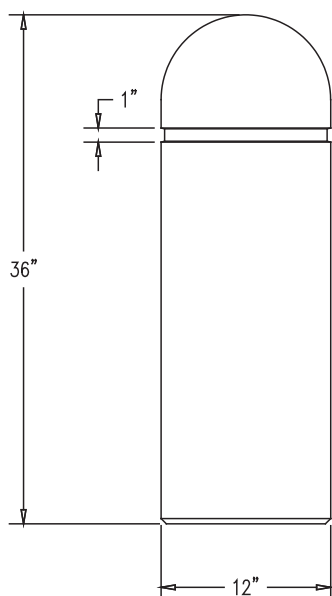


# TF6027

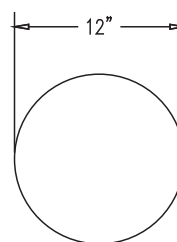
## Concrete Bollard with Reveal Line

### Product Data

Size	12" dia x 36"h
Weight	310 lbs
Material	Reinforced Concrete
Anchoring	Option A -(3)1/2" Threaded Inserts Option B -4"dia x 14"Core
Sealed	Factory Sealed
Options	Reflective Tape in Reveal



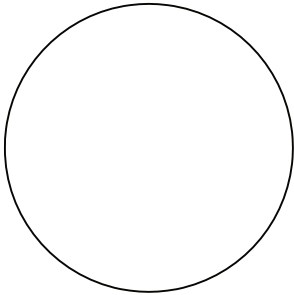
ELEVATION VIEW



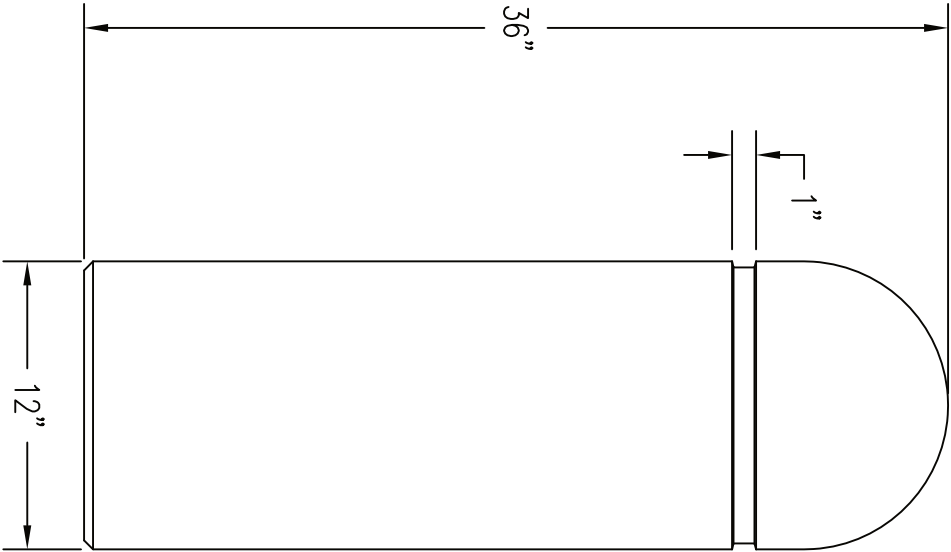
TOP VIEW

### Site Furnishings Limited Warranty:

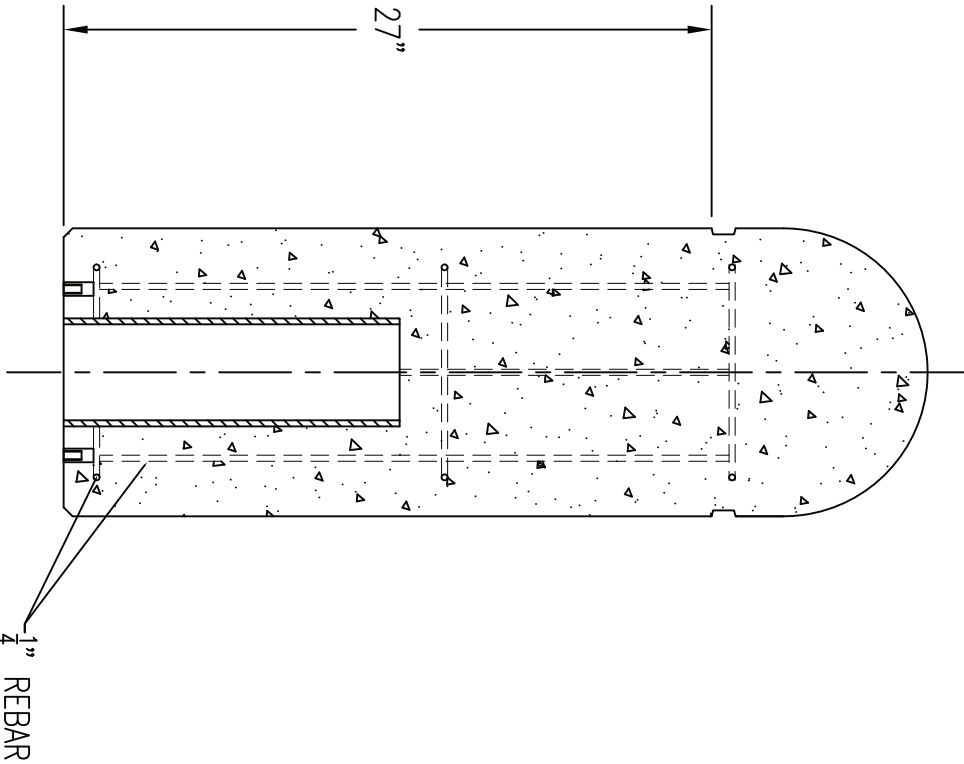
For a period of two (2) years for concrete products, one (1) year for plastic products and five (5) years for metal products when the customer has received their product, Wausau Tile, Inc. warrants its concrete products against defects in workmanship and materials per industry standards. This warranty does not cover the above products for cracking and faulting caused by settling due to an improper base; nor does it cover damage caused by impact, vandalism or natural disaster.



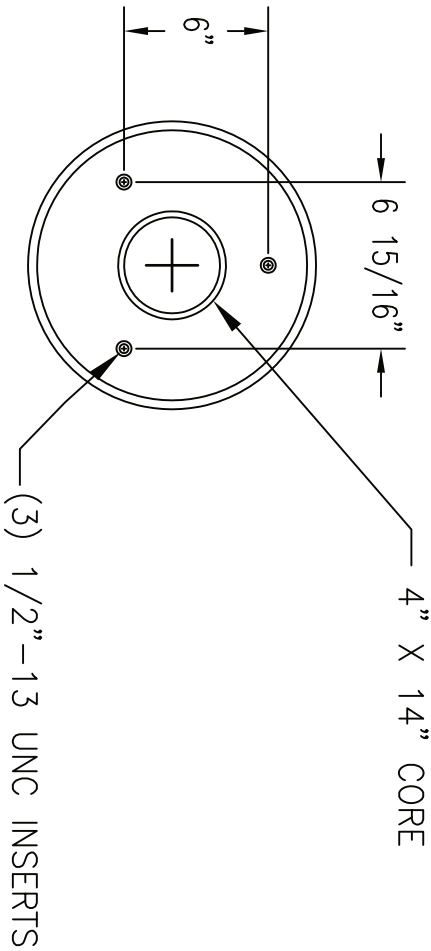
1  
TOP VIEW



2  
ELEVATION VIEW



4  
CROSS SECTION



3  
BOTTOM VIEW

REVISIONS		
NAME	DATE	NOTES
1	---	---
2	---	---
3	---	---
4	---	---
5	---	---
6	---	---
7	---	---
8	---	---

CONFIDENTIAL INFORMATION  
THESE DRAWING, SPECIFICATIONS AND OTHER INFORMATION AND DOCUMENTS ACCOMPANYING THEM ARE THE CONFIDENTIAL AND PROPRIETARY PROPERTY OF WAUSAU TILE, INC. THE DRAWINGS THEMSELVES SHALL BELONG TO THE OWNER FOR USE ONLY ON THE PROJECT. ANY ADDITIONAL USE SHALL REQUIRE THE PRIOR WRITTEN APPROVAL OF WAUSAU TILE, INC. THE PROPRIETARY INFORMATION CONTAINED WITHIN THE DRAWINGS AND THE DOCUMENTS IS AND SHALL REMAIN THE SOLE PROPERTY OF WAUSAU TILE, INC.

JOB NAME  
ADDRESS  
CITY, STATE ZIP

UNLESS OTHERWISE SPECIFIED  
DIMENSIONS ARE IN INCHES  
FRACTIONS  $\pm 1/8"$

DRAWN BY: SK
DATE: 6/12/15
CO NUMBER: ?
WEIGHT: 310 LBS

PRODUCT NO.

TF 6027