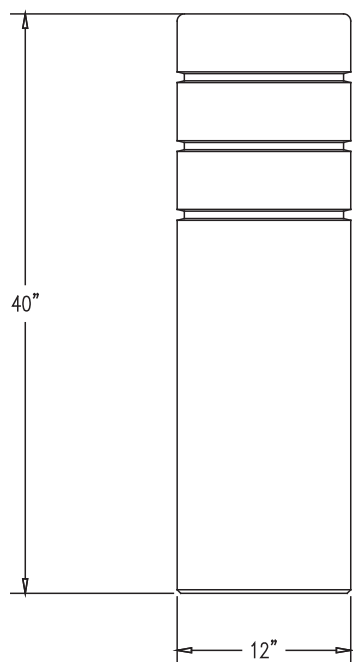


TF60221

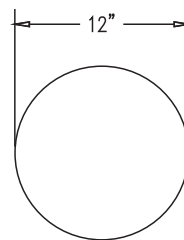
Concrete Bollard with 3 Reveal Lines

Product Data

Size	12"dia x 40"h
Weight	390 lbs
Material	Reinforced Concrete
Anchoring	Option A -(3)3/8" Threaded Inserts Option B -4"dia x 14"Core
Sealed	Factory Sealed
Options	Reflective Tape in Reveals



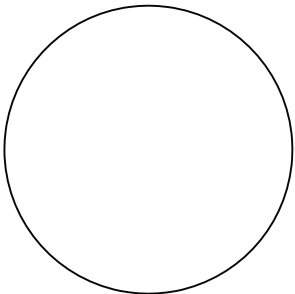
ELEVATION VIEW



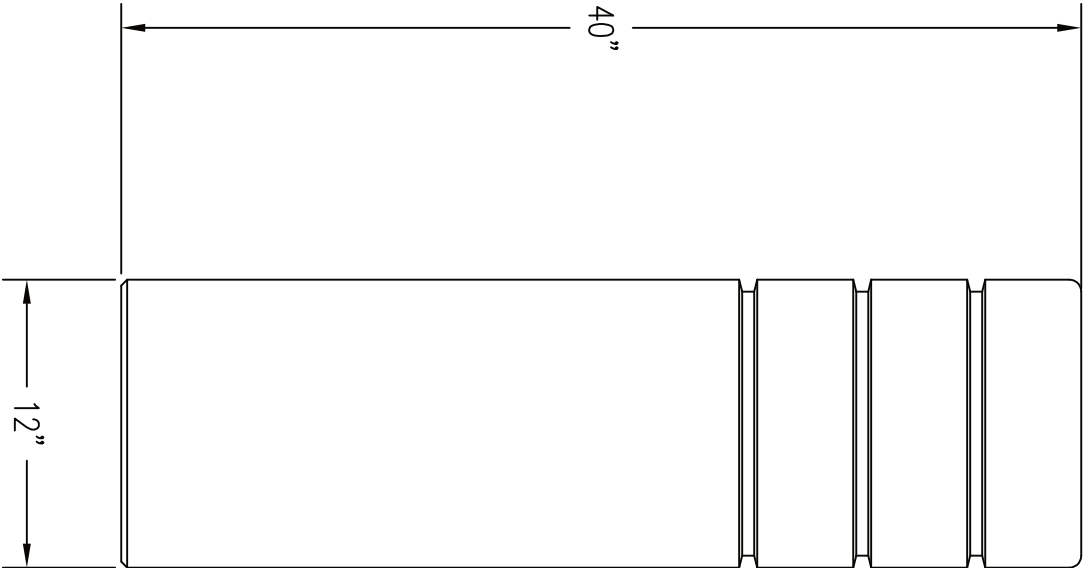
TOP VIEW

Site Furnishings Limited Warranty:

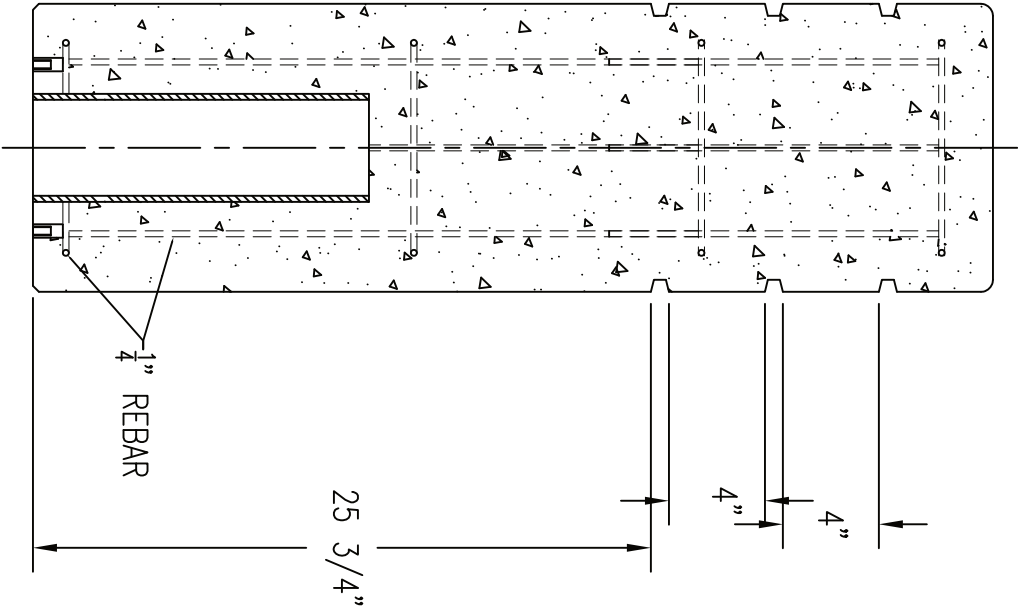
For a period of two (2) years for concrete products, one (1) year for plastic products and five (5) years for metal products when the customer has received their product, Wausau Tile, Inc. warrants its concrete products against defects in workmanship and materials per industry standards. This warranty does not cover the above products for cracking and faulting caused by settling due to an improper base; nor does it cover damage caused by impact, vandalism or natural disaster.



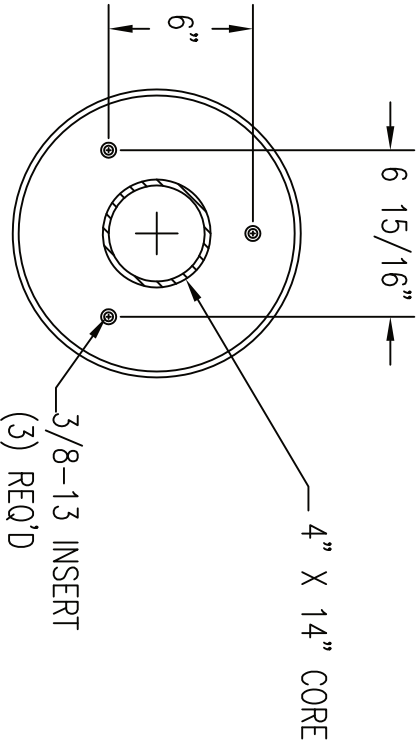
1
TOP VIEW



2
ELEVATION VIEW



4
CROSS SECTION



3
BOTTOM VIEW

REVISIONS		
NAME	DATE	NOTES
1	---	---
2	---	---
3	---	---
4	---	---
5	---	---
6	---	---
7	---	---
8	---	---

CONFIDENTIAL INFORMATION
THESE DRAWING, SPECIFICATIONS AND
OTHER INFORMATION AND DOCUMENTS
ACCOMPANYING THEM ARE THE
CONFIDENTIAL AND PROPRIETARY PROPERTY
OF WAUSAU TILE, INC. THE DRAWINGS
THEMSELVES SHALL BELONG TO THE
OWNER FOR USE ONLY ON THE PROJECT.
ANY ADDITIONAL USE SHALL REQUIRE THE
PRIOR WRITTEN APPROVAL OF WAUSAU TILE,
INC. THE PROPRIETARY INFORMATION
CONTAINED WITHIN THE DRAWINGS AND THE
DOCUMENTS IS AND SHALL REMAIN THE
SOLE PROPERTY OF WAUSAU TILE, INC.

JOB NAME
ADDRESS
CITY, STATE ZIP

UNLESS OTHERWISE SPECIFIED
DIMENSIONS ARE IN INCHES
FRACTIONS ±1/8"

DRAWN BY: SK
DATE: 6/12/15
CO NUMBER: ?
WEIGHT: 390 LBS

PRODUCT NO.

TF 60221